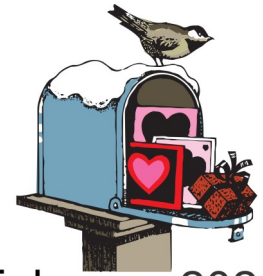




Emmanuel News



February 2021

ANNUAL MEETING Highlights

Budget Approved: The proposed Budget for 2021 was presented and approved

Facility Update: All repairs related to the hail storm have been completed with the exception of carpet replacement which will occur after the ceiling project is completed.

Food Pantry: Food Pantry continues to be self-sustaining and has been blessed with grants from Phillips 66, Town Pump and YVEC.

Call Committee: Efforts have been impeded by COVID; The Synod is beginning conversations with other denominational leaders to explore the idea of sharing ministers.

New Council Members

President	Jill Hoffman
Vice President	Liz White
Secretary	Dawn Petty
Treasurer	Sharon Wolske
Council Member	Patty McVay
Council Member	Robin McCaffree
Council Member	Meagan Malchow
Council Member	Linda Oberg
Council Member	Ricker Olson
Council Member	Greg Plath

Retiring Council Members

The following who are going off Church Council were recognized and thanked for their service:

Dawn Sherseth & Laurel Noland



Dear Emmanuel Church Family,

Few people know that I have no cousins, really. Our closest family members live over 500 miles away from Shepherd. When I first started attending Emmanuel 10+ years ago, I recall a lifelong member of this church referring to the congregation as her “Church Family”. I felt blessed to be welcomed into our Emmanuel family. I continue to be honored to be a part of this awesome group of people. The talents and giving nature of our congregation amaze me. I often hear friends talk about how fortunate Shepherd is to have our church in the community. While our church is a central building, it is so much more. We should proud of our commitments to help support our community. I look forward to working with our Church Council to continue promoting our mission as a welcoming church in a rural community, called by God to joyful worship, caring relationships, and loving service. We will follow God’s plan for us to grow in faith, family, and community.

Blessings,
Jill Hoffman
2021 ELC Council President

30 Books of the? Bible

Can you find thirty (30) books of the Bible in this paragraph?

Actually, there are 31 if you can find the variant of one Old Testament prophet's name.

There are 30 books of the Bible in this paragraph. Can you find them?

This is a most remarkable puzzle. It was found by a gentleman in an airplane seat pocket, on a flight from Los Angeles to Honolulu, keeping him occupied for hours. He enjoyed it so much, he passed it on to some friends. One friend from Illinois worked on this while fishing from his john boat. Another friend studied it while playing his banjo. Elaine Taylor, a columnist friend, was so intrigued by it she mentioned it in her weekly newspaper column. Another friend judges the job of solving this puzzle so involving, she brews a cup of tea to help her nerves. There will be some names that are really easy to spot. That's a fact. Some people, however, will soon find themselves in a jam, especially since the book names are not necessarily capitalized. Truthfully, from answers we get, we are forced to admit it usually takes a minister or a scholar to see some of them at the worst. Research has shown that something in our genes is responsible for the difficulty we have in seeing the books in this paragraph. During a recent fund raising event, which featured this puzzle, the Alpha Delta Phi lemonade booth set a new record. The local paper, The Chronicle, surveyed over 200 patrons who reported that this puzzle was one of the most difficult they had ever seen. As Daniel Humana humbly puts it, "The books are all right here in plain view hidden from sight." Those able to find all of them will hear great lamentations from those who have to be shown. One revelation that may help is that books like Timothy and Samuel may occur without their numbers. Also, keep in mind, that punctuation and spaces in the middle are normal. A chipper attitude will help you compete really well against those who claim to know the answers. Remember, there is no need for a mad exodus; there really are 30 books of the Bible lurking somewhere in this paragraph waiting to be found. God Bless.

COMMENTARIES OF THE CHURCH MOUSE

Greetings Friends and Neighbors,

February is here and my cousin Phil had his big dog and pony show this morning, indicating that we will have six more weeks of winter. Well, I say bring it on! With the mild winter that we have had so far, I look forward to six more weeks of the same. I haven't had to shovel much at all so far and I'm not complaining a bit.

Valentine's Day is on the 14th, so I need to get a special card and something nice for Mrs. T.C. She really is an amazing lady, especially putting up with all of my antics. I've said it before, but it still holds true today. You must remember to do something special for your better half on their Birthday and Valentine's Day or it will be a very, very long year. That is one mistake that I will never make again.

Government types and bankers get another day off for Presidents' Day on the 15th, as we honor all of the past and present Commander in Chiefs. It sure is a demanding job, full of critics, but I think I would like to give it a go myself. T. C. for president! Now we

have dogs back in the White House, but I think we are overdue for a Mouse in the White House. I know, I know, it's just a pipe dream, as Mrs. T.C. continues to point out, but the lifetime pension would be well worth it.



This month also holds my Birthday, so Happy Birthday to me! I've been watching the snow reports, hoping to get some good white stuff on the ski hill, so I can spend my special day flying down the slopes. Nothing like a day on the ski hill to remind you of your age and how out of shape your legs really are. Not to worry, I try to ski with caution, but the thrill of swooshing downhill is really exhilarating. If you are on the slopes

yourself, keep an eye out for the "blur of fur", followed by a resounding "Yippee"!

Well that is enough from me for now. I hope to see you in Church.

Your Faithful Friend in residence at Emmanuel.
T.C. Mouse

EMMANUEL LUTHERAN CHURCH WOMEN

Thank you to all the families who bought one of the cross rib roasts that we had purchased ahead of time for the Harvest Dinner. I am sure you enjoyed the delicious roasts. We still have some "bazaar" canned items, crocheted scarves, and wooden crosses for sale, on display in the nursery room at the church, so check that out when you are there.

LOVE , NOT FEAR

As we continue to struggle with this pandemic, here are some thoughts on how we need to cope with all these restrictions. Most certainly, we are not in control of the virus or the vaccines, or of the fallout from racial and political divides. But we can choose to let our light shine, to use the gifts we've been given, to be a positive presence, to love. We can choose to be about bridge-building and healing. We can choose not to let fear find a permanent home in our hearts, nor let it rule our lives. We can choose not to contribute to fearmongering. I say all of this fully aware that sometimes we are so overwhelmed that we depend on others to shine a light for us, until we can let our own light shine. We need each other!

Fear points us to where we need to grow spiritually. When a room is dark, we don't fear it. We turn on a light. When our lives are overwhelmed with fear, we can let that lead us to a choice point. What am I going to do to stop obsessing on the future and live in the now? How can I be present to what is? I don't need to overcome fear. I need to understand it and get the message to which it's pointing. Fear, worry, and anxiety are wake-up calls to change something in our lives. We need to LOVE, not fear, and that will help to make the New Year as Good as it can be.

FAITH, HOPE AND TRUST

FAITH: 2 Corinthians 4: 8-9, 16-18 "We have troubles all around us, but we are not defeated. We do not know what to do, but we do not give up the hope of living. We are persecuted, but God does not leave us. We are hurt sometimes, but we are not destroyed. So we do not give up. Our physical body is becoming older and weaker, but our spirit inside us is made new every day. We have small troubles for a while now, but they are helping us gain an eternal glory that is much greater than the troubles. We set our eyes not on what we see but on what we cannot see."

HOPE: Lamentations 3: 22-25 "The Lord's love never ends; his mercies never stop. they are new every morning; Lord, your loyalty is great. I say to myself, 'The Lord is mine, so I hope in him.' The Lord is good to those who hope in him, to those who seek him."

TRUST: Psalm 56:3-4 "When I am afraid, I will trust you. I praise God for his word. I trust God, so I am not afraid. What can human beings do to me?"

'WORRIED? TRUST JESUS!'



Christikon Clips

February, 2021

Information for our Congregations

Christikon Youth Camp Brochures have been mailed to every young person in your congregation who are completing grades 4-12. Save by registering before March 15. Additional brochures are available from your church office.

Family Adult Brochures will be out soon. Watch for yours in the mail or at your church.

Do it online! You can use the Internet to register for all camp sessions at Christikon, or to make a gift, or to find out more about this special ministry. Go to www.christikon.org.

Save the dates: The Annual Christikon Benefit Auction at the Billings Depot is coming on Sunday, April 18th. Watch for updates on our website.

The past year was dominated by pandemic, masks, and uncertainty yet we were thankful for the opportunity to do ministry. We safely held camp sessions, although challenging, all our effort ended up providing a powerful experience for those who attended camp. Our plans for the 2021 season are going forward and we look forward to again welcoming all! Watch for updates on our website.

It is the mission of Christikon to awaken and nurture faith in Christ —

exploring God's creation and the adventure of life together.

**CHRISTIKON • 1108 24th Street West
• Billings, MT 59102**

406 656-1969 • christikon@aol.com •
www.christikon.org

ELC Council Meeting 1/13/2021

Present: Linda Oberg, Patty McVay, Jill Hoffman, Dawn Sherseth, Laurel Noland, Meagan Malchow, Liz White, Ricker Olson, and Robin McCaffree

Devotions prayer led by Meagan

Secretary's report Everyone has read the minutes from the December meeting. Of note, Laurel and Liz made a correction to the September minutes regarding adding Jill to the Youth bank account. Jill made a motion to approve the minutes and Robin seconded. The motion passed.

Treasurer's report The treasurer's report was reviewed. Dawn made a motion to approve the treasurer's report from December. Patty seconded. Motion passed. There was a question regarding when the last propane had been filled. Laurel will check on this.

Call committee report

Liz read this email from Bishop Laurie to Kristianne, call committee chair. "I will be speaking with the Methodist bishop next Wednesday about this question and I hope to make a call to the UCC leader in the next week. So for your report, you could say that the bishop is beginning conversations with the Methodist and UCC denominational leaders to explore the possibility of doing ministry with one of our ecumenical partners in our area. Something like that. This is going to be a somewhat slow process but it could happen and is a great possibility for the congregation."

Nominating Committee The committee which consists of Laurel, Dawn, Meagan, and Jill, brought forth their nominations for the annual meeting for the positions needing to be filled. The positions and nominations are as follows:

President: Jill Hoffman

Vice President: Liz White

Treasurer: Sharon Wolske (*Robin*???)

Secretary: Dawn Petty

Council Member: Greg Plath

Council Member: Meagan Malchow

Christikon: Brad and Dawn Sherseth

Lutheran Rep: Sue Hawthorne

St John's: Jenny Ingram and Connie Herberg

Synod Assembly: TBD

Endowment: Sharon will have to withdraw as she is becoming the church treasurer. Laurel has volunteered to fill her spot.

Old business

Proposed Budget 2021

Laurel said there aren't too many changes and that the 2020 budget can be copied over to 2021. However, our giving is down 23% from last year. Jill recommends staying as close to last year's budget as possible. Liz

made a motion to roll over the 2020 budget into 2021 and present it at the annual meeting, knowing we will revisit the budget as needed for major changes (hiring a pastor, etc). As a side note, Ricker brought up a good point regarding the possibility of inflation and difficulty finding construction items this summer for the food pantry. We will find the quotes and revisit it at the annual meeting.

Eagle Scout projects- discussion tabled until a later date

Annual Meeting We will be doing an in person annual meeting as well as Zoom. Jill and Meagan will work out the details for this. We overestimated our giving units to be 100. If we take 20% of that, we would need 20 members for a quorum.

New Business

Group meetings at the church

Abbey requested a discussion regarding the possibility of letting the groups continue to meet in the church. We discussed this topic and came up with the following guidelines:

-Masks are to be worn at all times

-Hand sanitizer will be used going in and out

-Surfaces used will be wiped prior to and after use (bathrooms, doors, tables, chairs, etc)

-Members of groups will sit it in their family units and social distance

This is subject to change as the state and county mandates may change. Liz will work with Abbey to contact these groups and make sure the information is shared. The church will provide cleaning supplies and will have extra masks as needed. Linda has extra masks she can bring and Liz will double check our cleaning supplies.

(continued page 5)





(continued from page 4)

Office Supply

Linda has a quote from Billings Office System for a new printer at \$489.00. She will do a bit more checking to have a few to compare with. Laurel made a motion for Linda to buy a printer with a budget of \$500.00. Robin seconded this motion, it passed.

*Of note for next month’s meeting, add discussion regarding advertising our live services.

Service coverage (counters, readers, music, set up/cleanup)

- January 17th music-Jill service-Ricker
- January 24th music- Laura service-Liz
- January 31st music-Jill service-Liz
- February 7th music-Daisy service-Laurel

Next council meeting will be February 10th @ 7PM, via zoom or Emmanuel Lutheran Church. The council meeting was adjourned with the Lord’s prayer.

God bless you all and keep you healthy!
Liz White
Secretary
Emmanuel Lutheran Church



CARING RELATIONSHIPS

Prayers of the Church

Call Dawn Petty, 373-6673 with requests and updates

Members: Meagan Malchow's various health issues, Monty Mavity's battle with cancer, Mary Cossitt's grandson Carter Dodson, age 29, has MS. Patty McVay's adopted granddaughter, Keeva, age 4, is will be having another procedure under anesthesia early Tuesday morning, to take another look at her esophagus, She has pain eating, so doesn't want to eat, and is losing the weight she had gained. Vivian Pierce is doing better, she hasn't blacked out since being hospitalized. Mary Beddes had another surgery. Susan Swenson Crawford, daughter of the late Frank & Eva Swenson, was diagnosed with breast cancer and had surgery. She will start aggressive chemo and radiation therapy mid-December. Rob Emmons was in the hospital due to an infection so the recently installed hip had to be replaced with a temporary one, until the infection is gone. Then he will have another surgery to re-do the hip again. Rob came home Tuesday. He has 36 infusions (antibiotics) to do daily and then after that time frame, he will be without meds to make sure the infection is 100% gone. At that time, he will move forward to another hip surgery date. Dawn Sherseth's father, Gene Lundhagen, continues to have health issues with no improvement. He is scheduled to see a neurologist. Dawn's grandson and wife, David and Taylor Larson, are asking for your prayers, as they have started the IVF process , to help them start a family. They have been married almost six years, and are anxious for a little one. They would make very good parents.

Friends of the Congregation: John Mark Owens has stage 4 pancreatic cancer; Glen Ray has Parkinson's and dementia; Tonya Sullivan; Brittany Reinhardt has received a new kidney, Sari Stahl and family are having a bad time, no details other than that, but asks for our prayers. Jon Martin, a friend of Kristianne Wilson, had a stem cell transplant for lymphoma and is improving. Donna Mullen's sister, Linda Ernst, who has been waiting for a donor for a kidney due to PKD (polycystic kidney disease). Evagene and Jerry Emmett, as Jerry fell and ruptured a disc in his back and had to have surgery. Jerry Emmett is recuperating in a VA nursing facility in St George, Utah. They live in the Shepherd area but winter in Utah. John Clark of Shepherd has both heart and lung issues, and is getting very weak, and needs our prayers. Please pray for the FBI agents killed in Florida. They both left behind young children. They put their lives on the line every day to protect our citizens and deserve honor and our respect for their duty...likewise the police and sheriff deputies, and national guard who have given their lives to defend all of us.

Community Living:

St Johns United: Inez Oberg

Minnesota State Prison System: Rob Larson

Local Youth Serving in the Military: Dan Johnson and Matt

Grandpre deployed to Iraq; Taylor Green, Jacob Wagenaar, Tucker Wilson, Brooke Nebel Bohrer, Brandon Bohrer and

01 Brianne Malchow
02 Dawn Sherseth
03 Jill Hoffman
08 Scott Green
15 Destin Christman
15 Linda Oberg



20 Collin Wilson
23 LouAnn Grandpre
23 Rachelle Garcia
24 Mark Halvorsen
25 Bill Reitler
26 Peyton Christman



Emmanuel Lutheran Church
P.O. Box 66
Shepherd, MT 59079
Address Service Requested

We have a mission . . .

Emmanuel Lutheran is
a welcoming church in a rural
community, called by God
to joyful worship
caring relationships and
loving service.

We have a vision . . .

“We will follow God’s plan for us
to grow in faith, family,
and community.”

elcshepherd.org – elcshepherd@gmail.com



EMMANUEL LUTHERAN CHURCH
JOYFUL † CARING † LOVING